



12) Carl Tripp, outside China-3: Phan Rang's beach gate.



13) Guard tower near the NCO Club overlooking back of base.



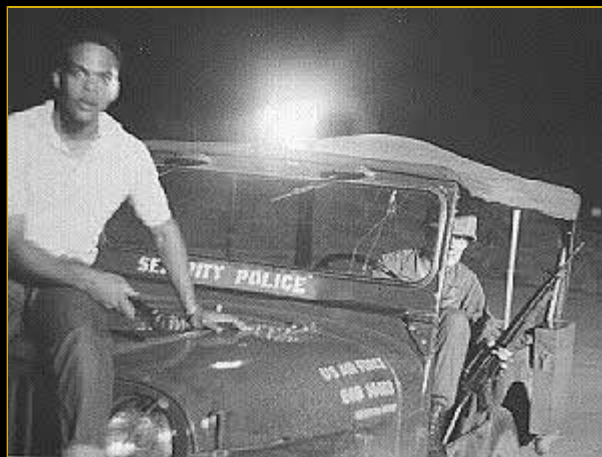
14) 35th Security Police Headquarters building.



15) SP HQ: Area to right was the fenced in SP's 'beer garden'.



16) SP base patrol jeep.



17 ) Two law enforcement SP's... names seem to fade with time.

**Go to Page 4**

**(Don Poss, VSPA and War Stories Webmaster)**

*We Take Care of Our Own*

Click to Report [BROKEN LINKS](#) or [Photos](#), or [Comment](#)