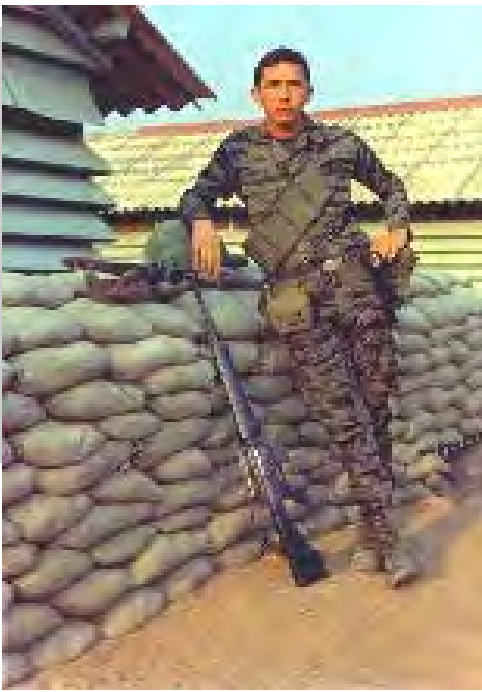


Vietnam Bien Hoa Air Base 3rd Air Police Squadron 1968

© 2002 Photos by [G. Ernest Govea](#)



1 - My good buddy Glen Davis, from West Virginia with his captured AK-47.



Glen Davis from West Virginia examines his captured AK-47



"Ain't it purtty!"



2 - Not a great shot, but close examination shows these SPs preparing a minigun for night duty. Woe to Charley if he encounters this team tonight.



Our miniguns were *slowed down* to fire 3,200 full metal jacket rounds per minute.

3 - I took this from the driver's seat of "Fluffy" our beloved Armored Personnel Carrier, M113. This is the North West perimeter area.





4 - Inside a "commando car." Note the knobs and ports through which SPs could fire their M16s. Anyone remember this man's name?



5 - G. Ernest Govea, behind an M60 machine gun on a commando car of the 3rd ACAV of the 3rd SPS.



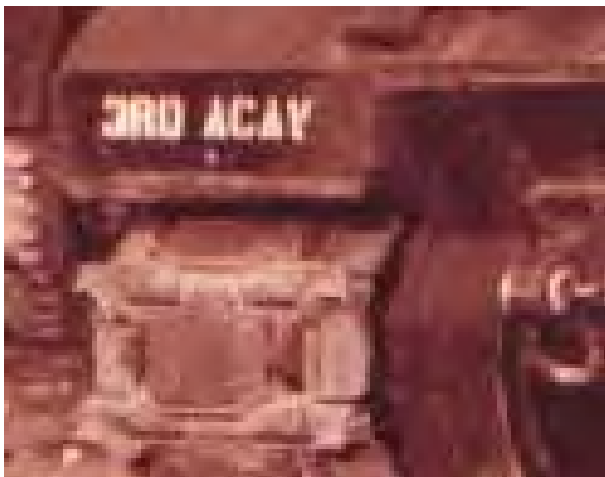
3rd ACAV of the 3rd SPS



6 - "Fluffy," fully armed, and my fellow crew members. I took the picture and was the driver. L-R: A buck sergeant whose name I no longer recall, A1C Ustonovich, Sgt. Dicks our track commander, and A1C Gelderman from Pennsylvania.



7 – A1C Gelderman from Pennsylvania mans the .50 cal. 3rd SPS



3rd ACAV of the 3rd SPS



10- US Army firepower from these Vulcans was awesome.





Photo-8 (above) – **The three APCs** on the right were among the elements of the 11th Armored Cav brought in to support the 3rd SPS in preparation for the Tet Offensive of 1969. There was also at least one tank, not shown here. During the lengthy rocket attack of the night of February 23rd, the tank crew members disobeyed orders from Lt. Col. Fowle, our squadron commander, and fired their big gun into the town of Bien Hoa.

Photo-9 (right) - Lt Col. Fowle ordered our LE troops to “beat senseless” any troops apprehended from the 11th Armored Cav. Here, US Army and SPs (in camouflage) mingle with 11th Armored Cav troops. So far as I know, that order was never carried out.



Gelderman, from Pennsylvania, mans the .50 cal,