

WELCOME

To

NAKHON PHANOM

Royal Thai Air Force Base

Home of the 56th Special Operations Wing



WELCOME

On behalf of the U.S. servicemen of this installation and our host, the Royal Thai Air Force, welcome to Nakhon Phanom Royal Thai Air Force Base, Thailand, home of the 56th Special Operations Wing.

Thailand has a proud and exotic history and a very promising future. Your stay here should be a valuable experience because of the country's unique cultural heritage. Our relationship with the citizens of Nakhon Phanom has been friendly. Mutual cordiality and respect have been our "by-words." Please help us maintain and further improve this excellent example of international cooperation and friendship.

It is our hope that this brochure will provide you with information of value during your stay here. Our facilities and services are some of the best in Southeast Asia. They are being continually improved and expanded. We encourage you to use and enjoy them.

When you arrive here, many of the facilities shown or mentioned in this booklet will have moved to new and improved quarters, and many new facilities added.

Again, welcome to Thailand and NKP.

Photos by Sgt. Russell S. Parrish
(Det 12, 601st Photo Flight)
Produced by 56th SPOPWG (DXI)
Edited by SSgt. Don Dick

Printed by The Craftsman Press, Limited Bangkok, Thailand



TEMPLE IN NAKHON PHANOM CITY

TABLE OF CONTENTS

Map of Thailand	4	At Your Service	18
NKP RTAFB History	5	Recreation Services	22
Wing Mission	6	Base Exchange Service	24
Thailand	7	Base Map	25
NKP and Northeast	9	General Information	26
Climate	11	Ambassador---You	Inside Back Cover
Assignment Preparation	13-16		

NKP RTAFB HISTORY



RED HORSE CONSTRUCTION

Nakhon Phanom RTAFB, referred to as NKP and known as "the biggest little base in the east," is located about nine miles southeast of Nakhon Phanom city. More than 16,000 inhabitants live in this northeastern Thailand city, and the base population approaches the 6,000 mark.

The U.S. military first arrived here in 1963 when the U.S. Navy's Mobile Construction Battalion Three (SEABEES) laid out the runway and raised the first buildings as part of a United States commitment under SEATO. The 507th Tactical Control Squadron was the first U.S. Air Force unit assigned to NKP. The bulk of its members arrived in early 1964.

The 5th Tactical Control Group exercised command jurisdiction over the 507th until May 1965 when the 6235th Air Base Squadron was formed. Overall control of USAF units was then turned over to 35th Tactical Group (now 631st Combat Support Group) at Don Muang RTAFB, Thailand.

On April 8, 1966, the 634th Combat Support Group was activated and the

6235th Air Base Squadron deactivated. Shortly thereafter a major construction program began. The 634th assumed responsibility for all base support functions.

One year later, April 8, 1967, the 56th Air Commando Wing was activated and the 634th Combat Support Group was redesignated the 56th Combat Support Group.

Major expansion and construction programs are still being conducted at NKP. The base has more than doubled in size during the last several years.

THAI CUSTOM

* The Thai greeting called the "Wai" is done by putting the hands together in a praying position before your face and slightly nodding your head. Many Thais will "Wai" in addition to shaking hands with you. It is always polite to "Wai" in return.

* Treat women with politeness and respect. Touching or showing fondness for Thai women in public is considered improper and offensive.

About the Wing

"CAVE TONITRUM" - "Beware of the Thunderbolt," serves today as the motto of the 56th Special Operations Wing. The wing, whose history traces back to the days prior to World War II, was born Jan. 15, 1941 as the 56th Pursuit Group (Interceptor). It was activated at Savannah, Ga. with its first aircraft being P-39s and P-40s.

During May 1942, the unit was redesignated as the 56th Fighter Group and received P-47s in June. After completing combat training, the group was moved to England during December 1942 and assigned to Eighth Air Force. The group first entered combat with a fighter sweep in the area of St. Omer Apr. 13, 1943. During the next two years, pilots of the 56th destroyed more enemy aircraft in aerial combat than any other fighter group of Eighth Air Force.

The 56th engaged in counter-air and interdiction missions during the invasion of Normandy and also participated in the Battle of the Bulge. It received two Distinguished Unit Citations during World War II.

During its long history, the wing has been deactivated and reactivated three times. The 56th came to life the last time on April 8, 1967 as an Air Commando Wing of Pacific Air Forces. Its new duty station was Nakhon Phanom RTAFB, Thailand. On Aug. 1, 1968, the 56th Air Commando Wing's name changed to its current designation, 56th Special Operations Wing.

The principle mission of the wing in Southeast Asia is to assist in fulfilling USAF operational requirements here.



CONTROL TOWER

In addition, the wing supports a number of tenant organizations, all having roles in USAF operations in Southeast Asia. Several of these are Det 5, 621st Tactical Control Squadron, 1987th Communications Squadron, 23rd Tactical Air Support Squadron, and Task Force Alpha.

Due to the variety of units and missions here at Nakhon Phanom RTAFB, your assignment will be interesting and educational. All units here are guests of the Royal Thai government.

THAILAND



KING AND QUEEN OF THAILAND

Thailand is a country about the size of France and nearly as large as Texas, with a population of more than 30 million. The Royal Kingdom of Thailand is located on the Southeast Asian peninsula, bordered on the east by Cambodia, and Laos, on the west by Burma, on the north by Burma and Laos, and on the south by Malaysia and the Gulf of Thailand.

Bangkok, the capital city, lies at latitude 14 degrees north, near the 100th

meridian approximately 900 miles north of Singapore.

The topography of the country varies from flat plains in central Thailand to rugged mountains and jungles in the north. Rice is the wealth of the country. Other profitable exports are corn, tapioca, kenaf, rubber, teak, tin, kapok, and lac.

About 80 per cent of the people are of the Thai race, and may be categorized as Central Thai, Northeastern Thai, or

Northern Thai. The minority groups in Thailand number approximately six million, with the Chinese representing about 50 per cent of this total.

Over half of the Chinese are from Suatow and are concentrated principally in the Bangkok area and at various locations in the southern peninsula, in most cases intermingled with Thai. Other important groups include almost 900,000 Malays, about 450,000-600,000 hill tribesmen in the north, 50,000 Vietnamese and about 200,000 other minorities.

More than 90 per cent of the population is Buddhist. Buddhism is the national religion and its influence on government, economy and society is profound. This influence will be immediately noticeable to Thailand newcomers as they visit the various beautiful temples and monuments dedicated to religion, government and the Royal Family. Although Buddhism is the national religion, there has never been any restrictions upon religious freedom.

The most honored and respected person in Thailand is the King. He is the head of state, the spiritual leader of the people, defender of the faith, and living symbol of the country's rich culture.

The present King, His Majesty Bhumiphol Adulyadej (pronounced Poom-me pon Adun-ya-det) was born in Cambridge, Massachusetts, December 5, 1927. He married Queen Sirikit in 1949. Their Majesties have four children, three daughters and a son, the Crown Prince, who was born July 28, 1952.

The King's Anthem is played at the end of large public gatherings, at plays, motion pictures, and other similar events. The entire audience (including Americans) is expected to stand at attention.

The people of Thailand are friendly,



SUKO THAI RUINS

hospitable and very much interested in the western world. Many of the people speak English, and this is, for the most part, the "foreign" language taught in public schools.

Western dress is worn by many people in the cities. The status of women in Thailand is unusually high for the orient. The Thais have never had a caste system, their women have never been secluded, and increasing numbers are entering into business and the professions.

During your stay in Thailand, you are considered a guest of the nation. The Thais are our best friends in Southeast Asia. Match this friendship with your own, their gracious hospitality with honest appreciation, their country and their traditions with genuine interest.

THAI CUSTOMS

* Standing over a seated Thai when talking to him may well cause him to take offense. Sit with him

* Don't stomp your foot, point your finger or your toe at a Thai. This is considered very bad manners.

NKP AND NORTHEAST

Northeast Thailand is that portion of the country that juts out from the Central Plains into the space between Northern Laos and Cambodia. It accounts for one third of the land area of the country and contains a third of Thailand's population.

The people of the northeast differ somewhat from the Thai in other parts of the country. The majority ethnic group in Nakhon Phanom and Northeastern Thailand is the Thai-Lao. The Thai-Lao are closely related to the Laotians in Laos.

They are distinguished from the central Thai by their preference for glutinous rice, by certain differences in dialect, in the style of their Buddhist architecture and terminology, and by differences in respect to such cultural characteristics as music. Despite these differences, the northeasterner considers himself Thai and holds the King and Buddhism in deep respect.

The traditional Thai-Lao area includes much of the Korat plateau region of Northeastern Thailand as well as modern Laos. Interchange and migration of ethnic Thai-Lao back and forth across the Mekong River have been and continue to be frequent.

The population of the province is more than 500,000. Nakhon Phanom city, the provincial capital, has a population well in excess of 16,000. It is located on the Mekong River which forms the Thailand-Laos border at this point. Directly across the river from Nakhon Phanom is the Laotian city of Thakhek.

Nakhon Phanom RTAFB is approximately nine miles southwest of the city. Several smaller villages are located between the town and base. Numerous



BUILDING A SCHOOL

other hamlets are within five miles of the base.

As in most of Thailand, the main occupation of the people is agriculture. Rice is the major crop.

As is true of other large towns in the northeast near the Mekong, Nakhon Phanom has a sizeable Vietnamese population, most of whom fled here during the French-Indo China War in the 1940s and 50s. A majority of the city's skilled craftsmen are drawn from the Vietnamese population.

The Thai domestic airline serves the city of Nakhon Phanom seven times weekly,



INSTALLING A WELL

but no train service is available. The roads leading to the city, both from Sakon Nakhon to the southwest and Ubon to the south, are mostly unpaved. Poor road conditions during some parts of the year often limit automobile driving to the city itself.

Although Nakhon Phanom isn't one of Thailand's major cities, the interested observer will find it a satisfying miniature of the Thai nation and culture.

The northeast is significant today because it is the chief location of communist activity directed against the Royal Thai government. An estimated 1,000 to 1,500 organized, armed insurgents are located in the remote jungle areas of several northeastern provinces. The most critical sites of the activity are the areas of Nakhon Phanom, Sakon Nakhon, Ubon, and Nongkhai.

These insurgent bands, partially trained and supported from outside the country, attempt to feed on the poverty and remoteness of many villages. Their chief weapons have been armed propaganda meetings, assassinations of local officials, recruitment of "jungle soldiers" and the organization of village support cells.

Evidence to date indicates that they have not succeeded in building a viable political movement capable of sweeping the country. However, they do pose a certain security threat to the country, which the Thai government has countered with determination.

Through a concerted plan of military, police and civilian action, the government is providing rural security and meeting the economic and social needs of its northeastern villagers.

The United States government, through the embassy, the armed forces, the Agency for International Development mission and the United States Information Service, are supporting the Thai government in its counter-insurgency effort with materiel aid, training and technical assistance. However, most of the progress is being made by agencies of the Royal Thai government.



AIRCREW QUARTERS

CLIMATE

The climate of Nakhon Phanom and Northeast Thailand is tropical with three distinct seasons: (1) the cold season, (2) the hot season and (3) the rainy season. These climatic seasons are based on two major wind systems, the northeast and southwest monsoons.

During the northeast monsoon, from November to mid-March, NKP and the surrounding area experience the cold season. It's characterized by fair to clear skies, practically no rain, cool temperatures and occasional cold surges from the north. The temperature drops into the 40s.

The transition from northeast to southwest monsoon is known as the spring intermonsoon. From late March to early May-NKP's hot season-the wind flow changes from a dry northeasterly flow to

a moist flow from the southwest.

During this period, the Nakhon Phanom area gets increased rainfall in the form of heavy showers and thundershowers accompanied by temperatures ranging above 100 degrees.

Northeast Thailand comes under the full force of the moist southwesterly wind flow during the rainy season from late May to October. Cloudy skies, hot and humid air, heavy thunderstorms and light to calm winds prevail during this season.

Although Thailand has basically a tropical climate, you'll experience a wide range of weather conditions during your stay here. So bring your raincoat, flight or field jacket, an electric blanket, a sweater or two and, above all, a swimming suit. You'll 'weather' the fun if you do!

CLIMATOLOGICAL AVERAGES

Element	JAN	FEB	MAR	APR	MAY	JUN	JUL	AUG	SEP	OCT	NOV	DEC
Extreme Max Temp	97	99	103	106	102	100	99	97	95	95	95	93
Mean Max Temp	84	86	92	95	92	89	88	87	87	87	86	83
Av Temp	71	75	80	84	84	83	81	81	81	78	75	71
Mean Min Temp	58	63	69	74	75	76	75	77	74	69	64	58
Extreme Min Temp	35	43	48	57	66	68	69	66	65	57	43	42
Av Rainfall (in)	.2	7	1.1	3.5	9.1	15.8	18.7	20.5	12.2	2.5	.2	.2
No. days W/Rain	1	1	2	4	10	14	16	17	12	4	1	1
Av Relative Hum %	73	72	67	67	79	83	85	86	85	76	72	71

Assignment Preparation

Here are a few words about the handling of your personal affairs. Before leaving the U.S. for an assignment in Thailand, be sure to make necessary allotments and other arrangements for your family's financial security.

Making an allotment to your wife before departing your stateside duty station can't be over emphasized. Do not wait until you get here. The time involved in processing an allotment here could cause your family unnecessary anxiety.

This is remote duty. Your dependents can not accompany you. So, do the next best thing. Make sure they are provided for in every possible way prior to leaving the U.S.

Again, make sure you take care of your personal affairs BEFORE you leave your stateside base for duty at Nakhon Phanom RTAFB.

CLOTHING

The following suggestions should help you decide what clothing and personal items to bring with you:

The utility fatigue uniform is authorized for year-around wear. You should also include plenty of socks, one or two sets of 1505s and a rain coat.

Do not bring your dress blue uniform or other heavy clothing. They will mildew in the humid climate here.

Although the climate of the area is considered tropical, we do have a cold season. So be sure to bring your field

jacket. The temperature occasionally drops into the lower 40s.

Upon your arrival here, you'll be issued four sets of tropical fatigues, two pair of tropical boots, hat and poncho.

Civilian clothing is recommended for wear in the local town. You should bring items that are washable, preferably cottons. Nylon and similar fabrics aren't recommended. You can purchase tailor-made clothing here at reasonable rates. In many cases, you will pay less than the price of custom-made items elsewhere. You should bring a civilian jacket or heavy sweater for cool evenings.

The base clothing sales store is open daily and is located in building T-185. The store stocks all authorized items of military clothing and accessories except blues.

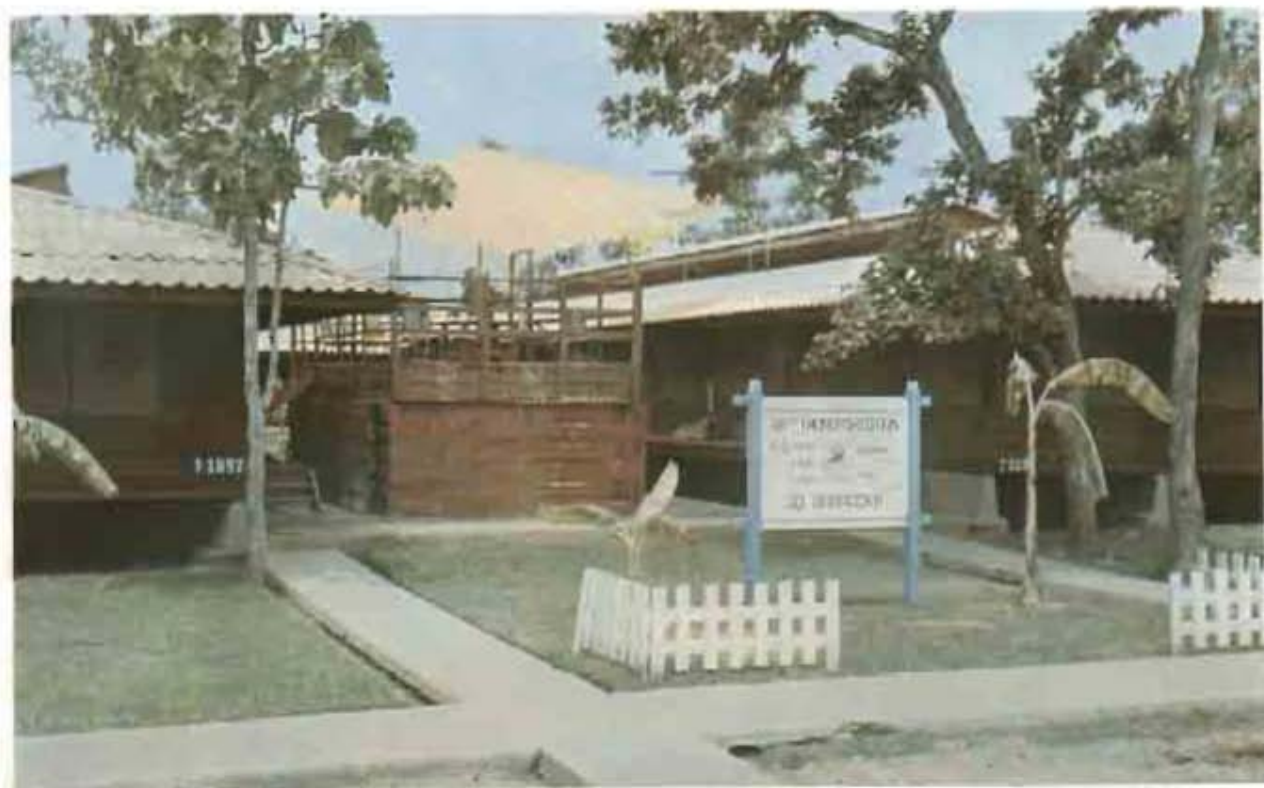
REPORTING

Now, you should be about ready to head for Southeast Asia and Nakhon Phanom RTAFB. After you have taken care of your personal affairs, immunizations, etc., you probably wonder what is in store for you upon your arrival in Thailand.

You will arrive at NKP by military airlift, probably on a C-130 from Don Muang RTAFB at Bangkok, Thailand. However, before departing the port of entry, you may encounter a delay of from one to five days awaiting transportation.

In all cases, the delay involves additional expenses because you may have to

(Continued on Page 17)



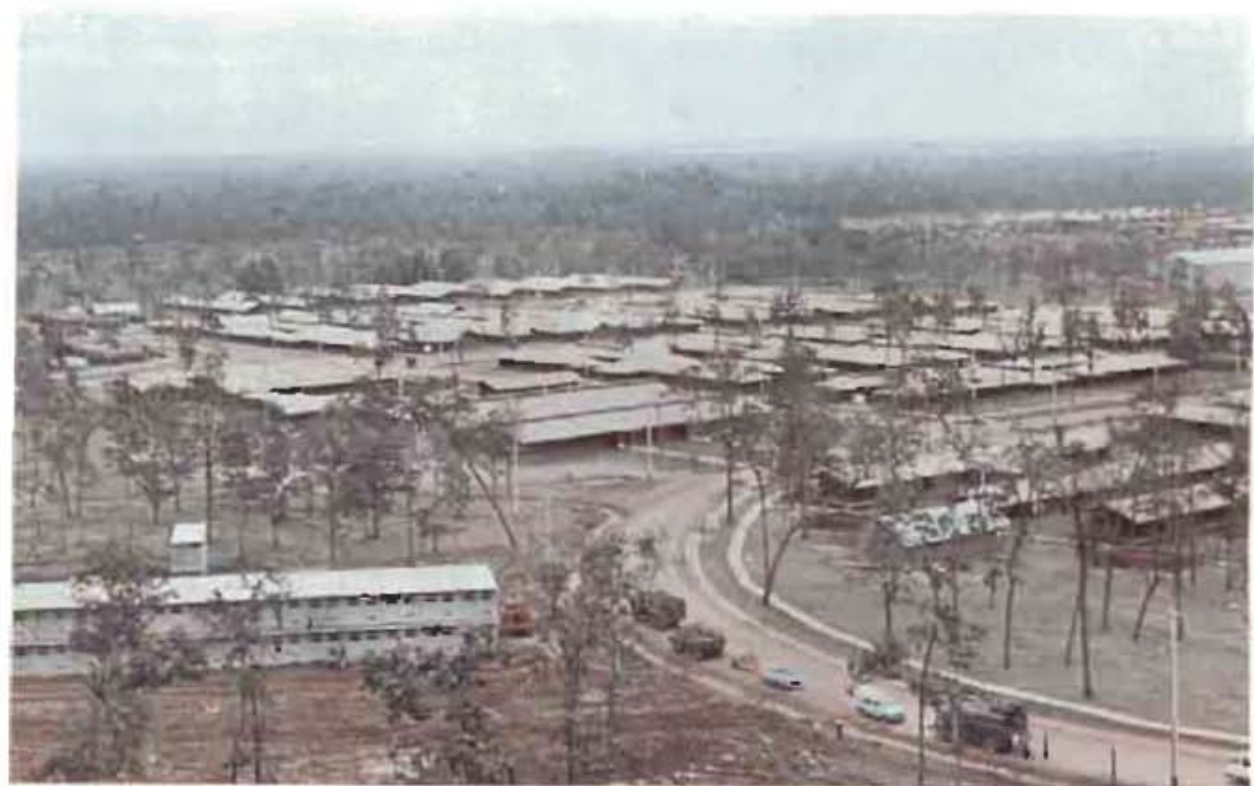
AIRMAN HOUSING



DINING HALL



SOON-TO-OPEN USO CLUB



AERIAL VIEW



FIRE STATION



MEDICAL AID



BOWLING CENTER



OFFICERS' OPEN MESS

(Continued from Page 12)

use non-government quarters, and government meals may not be available. Although you will be reimbursed after arriving at NKP, you should bring enough funds to defray possible costs of food and lodging.

Upon your arrival at NKP, a member of CBPO will meet and brief you on processing procedures and where to report.

After arrival, you will be required to attend a newcomer's briefing at the base theater. At this briefing, staff officers will give you detailed information about the surrounding area and discuss base regulations. All newcomers will remain on the base until they have received this briefing. These briefings are held each Tuesday.

SECURITY POLICE

The primary mission of the 56th Security Police Squadron is to provide physical protection of U.S. personnel and resources assigned here. All actions concerning security should be directed to this squadron.

You should insure that your Armed



VEHICLE CHECK



LIBRARY

Forces Identification Card, DD Form 2AF, and Geneva Convention Card, DD Form 528, are in order before departing your present duty station.

Privately owned firearms will not be carried in Thailand. You're strongly advised not to attempt to bring personal weapons into this country. Should you acquire a firearm while in Thailand, it must be registered and stored with the security police within 24 hours of receipt.

Ammunition for privately owned firearms is not authorized. It will be confiscated as contraband and destroyed.

For your convenience, a Security Police Town Patrol is on duty in the city of Nakhon Phanom from 0800-2400 hours daily. They can provide information concerning the customs of the town's people, entertainment establishments and the average prices of merchandise.

Security Police headquarters is located in building T-172.

AT YOUR SERVICE

MEDICAL FACILITY

NKPsites now enjoy the use of a modern, air conditioned 25-bed modular medical facility capable of rendering all routine medical and dental services.

Specialty cases that cannot be cured for at the base facility are acromedically evacuated to other medical facilities having the required specialty service.

Flying personnel should insure that their physicals will not expire prior to completion of their tour here. Flight physicals may be waived for a period of not more than two years. If you've been granted a waiver that expires during your tour, you should have it renewed. Personnel requiring altitude chamber training should insure that their card will not expire during their tour here.

You should do your best to bring yourself into a Class I dental condition before departing your current duty station. Although Class II is acceptable for Southeast Asia assignments, conditions occasionally deteriorate and it is possible to go from Class II to Class III within 60 days. Thus, one could depart his home station, take leave, do a TDY and report in as a Class III.

Personnel requiring appliances and accessories such as hearing aid batteries, dental partials and glasses should insure that they have the required number of such items before departing the continental U.S. The time involved in getting the items in this remote area could cause you a loss in job proficiency and personal discomfort.



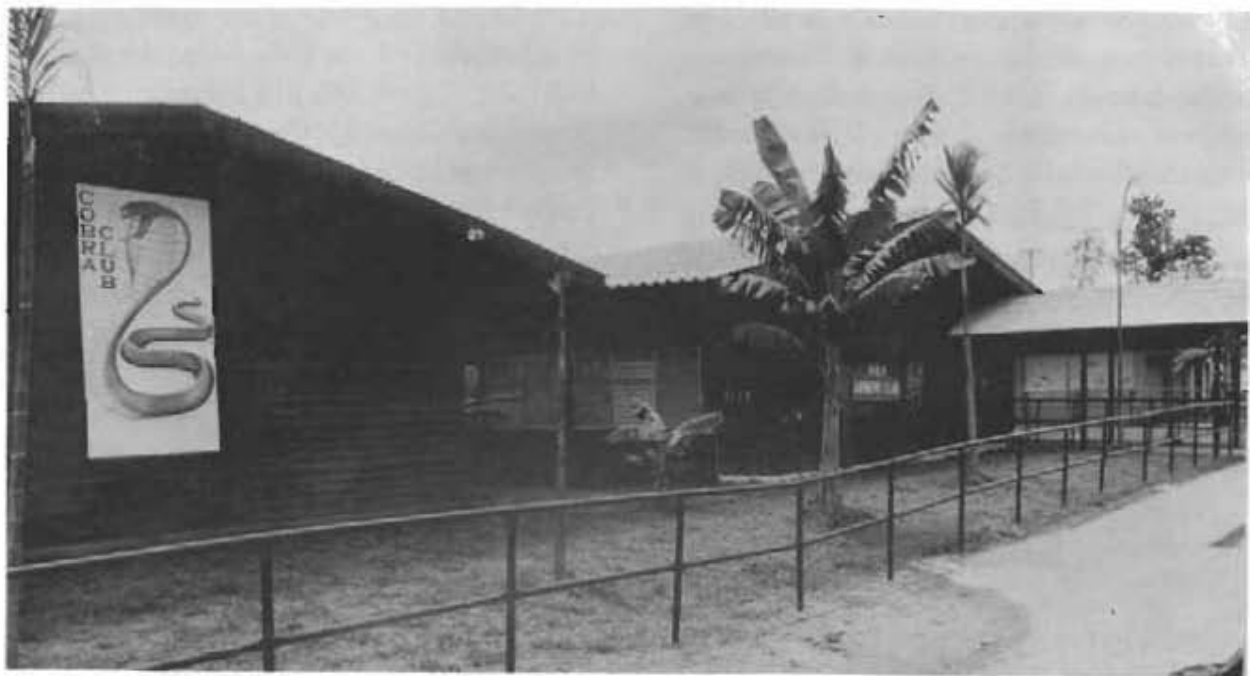
NEW MEDICAL FACILITY

MARS STATION

Only official telephone calls will be made from Nakhon Phanom RTAFB. Personal calls may be made through the Military Affiliate Radio System (MARS) station, located in building 778.

In cases of personal emergencies, individuals should contact the American Red Cross office for assistance. If the emergency warrants, the individual will be granted permission to use a base telephone to complete his call.

NKP's MARS station has two high frequency single sideband radio circuits. Phone patch calls to the continental United States must be made in person. The station is open 24 hours per day.



AIRMEN'S OPEN MESS

PAY AND FINANCE

Complete military and travel pay services are provided by the base accounting and finance office, located in building T-615.

While in Thailand you will be paid once each month by U.S. Treasury check. At your request upon clearing in, this check may be sent to a checking account established by you at the Bank of America facility. Make every effort to handcarry your military pay record and travel payment card. Failure to do so may delay receipt of authorized payments.

If you bring the required documents, your travel voucher will be paid within 48 hours after your arrival here. At this time, you will also receive any military pay due you.

In addition to the normal pay and allowances, personnel in pay grades E-7 and above will receive a cost of living allowance. Married personnel-pay grade E-4 (with over four years of service) and over-are entitled to a family separation allowance. All enlisted personnel will receive foreign service pay.

Subsistence for enlisted men in grades E-7 and above is \$2.57 per day. Overflight of Vietnam qualifies you for income tax exemption for the month of the flight.

The currency unit of Thailand is the baht, which is divided into one hundred satangs. An easy way to remember U.S. dollar to baht exchange rate is: \$1.00 equals 20.72 baht.

Baht may be purchased at the finance office, military finance facility (Bank of America) and any of the open messes. Baht is the only currency servicemen are permitted to use on the Thai economy.

The finance office is open from 0700-1700 daily.

PERSONAL AFFAIRS OFFICE

Information and counseling on many matters which effect your personal welfare may be obtained at the Personal Affairs Office, building T-610. This includes answers to questions concerning government and commercial life insurance, passports and visas, veterans benefits, retirement benefits and various related topics.

Members of the office's staff also provide counseling on casualty assistance to the next-of-kin of deceased personnel, survivor's benefits, personal documents, naturalization and many other subjects of concern.

Although passports are not required for military personnel entering Thailand PCS, it is encouraged that if you plan to travel outside the country during your tour, either on leave or R&R, that you obtain a passport required for this type travel.

BANKING

Normal stateside banking services are provided at NKP's military finance facility (Bank of America) located in building T-699. The finance facility will cash bank drafts, money orders, and traveler's checks. U.S. dollar personal checks up to \$100 can be cashed as per U.S. Treasury Department regulations.

There is no service charge for maintaining checking accounts. These accounts accrue interest at the rate of five per cent annually. Interest is paid quarterly.

The finance facility also sells U.S. Savings Bonds, Freedom Shares, travelers cheques, bank drafts, and sells and purchases Baht.

Hours of operation are:

1000-1500 Monday through Friday

1000-1300 Saturday

0730-1500 Military Paydays

Closed Sunday and Holidays

BASE CHAPEL

Protestant and Catholic worship services are provided on a regular basis. Jewish services are conducted periodically by a visiting rabbi. Several denominational services are conducted through certified lay leaders.

To aid in meeting the spiritual needs of a number of the men here, the staff of the base chapel recently initiated a mobile chapel service. This makes it convenient for the men working different shifts to receive spiritual assistance and counseling without leaving their work area.

In addition to these services, the Catholic Holy Name Society and Protestant Men of the Chapel have very active programs, especially in the area of community relations.

Three Protestant and one Catholic chaplains are assigned here and are available at all hours for spiritual assistance and personal counselling.



CHAPEL SERVICES

AFTN

"Serving those who also serve in Southeast Asia, this is A-F-T-N 770" or "This is A-F-T-N-the American Forces Thailand Network, Channel 71," are statements that you'll hear hundreds of times during your tour at Nakhon Phanom RTAFB. They signify the radio and television service which broadcasts at NKP daily.

With network headquarters at Korat RTAFB, the local station, AFTN-770, broadcasts 24 hours daily. Shows heard on AFTN radio include "Grand Old Opry," "Chris Noel," "Ira Cook," "Jazz Unlimited," "Polka Party," and many more. Many shows such as "Hullabaloo" and "Wide Wonderful World of Country" are produced "live" by NKP's broadcasting and engineering personnel.

The station, which now boasts some of the finest professional equipment available, began as a "home made" facility in March 1966. A tape recorder and turntable were the major items of equipment. Located at the main gate, it was manned by security policemen. In July, the equipment was moved to the communications center near the flightline and operated by the men of the 606th Special Operations Squadron. The present facility became operational in April 1967.

The local AFRTS television station went on the air for the first time on



AFTN - CHANNEL 74

Christmas day, 1968, and at that time was broadcasting from a tractor trailer van. The entire station was located in the van, with the film library in the adjacent building. Channel 74, is a UHF station, so a reminder, you must have a UHF antenna to pick up the station properly.

This station broadcasts between the hours of three and midnight weekdays, and from 10 a.m. till 1 a.m. on Saturday and Sunday.

AFTN-770 and AFTN - Channel 74 welcome you to Nakhon Phanom RTAFB, Thailand, and hope that they make your tour a little more enjoyable in the field of entertainment.

POST OFFICE

The consolidated mail room is open 24 hours daily. The post office (APO San Francisco 96310) is open Monday through Saturday to provide complete postal services, including stamp sales and parcel post handling.

Your address here will be:

AJC Jim Jones, (SSAN)

Organization

Box No.

APO San Francisco 96310

LEGAL ASSISTANCE

The Staff Judge Advocate Office, located in building T-600, provides legal assistance for all military personnel assigned or attached to base units here. All legal services listed in AFR 110-4 are available. Counseling is provided for such matters as immigration, naturalization, taxation, wills and powers of attorney.

You should insure that your legal affairs are in order prior to departing your present duty station for Southeast Asia. Wills, powers of attorney and other such documents should be obtained if required.

AMERICAN RED CROSS

The American Red Cross field director's office, located in building T-600, provides base personnel with emergency leave and communications assistance as well as financial assistance when a bona fide emergency exists.

The staff is available to counsel individuals on personal and family problems, humanitarian reassignments and many other subjects. Service is available 24 hours daily. Office hours are:

0730-1730-daily

Phone: 2937 or 2988

However, in emergency cases, a member of the Red Cross staff may be reached during non-office hours by contacting the staff duty officer, extension 2845.

NKP NEWS

The NKP News, the base newspaper, was judged the best Class II newspaper published in Pacific Air Force (PACAF) command for 1967 and best Class II newspaper Air Force-wide in 1968. Its policy is to provide local coverage of current events and information not immediately available to base personnel from other sources.

The editor and information staff are located in building T-235.

The information office is the sole base agency for releasing information about activities and personnel assigned here. Releases, such as hometown news items about you, are handled by this office.

RECREATION SERVICES

NKP has a variety of recreational activities and facilities available for the sports enthusiast. Besides existing facilities, future plans call for a golf driving range, skeet range, two handball courts and an archery range.

SPORTS

Varsity sports in the Thailand Sports League program include basketball, touch football, volleyball, softball, bowling and

tennis. Golf and other activities will be added to the schedule as soon as support facilities are available. All varsity competition is in-country, since personnel assigned to Thailand bases can not participate in out-of-country competition.

Besides the varsity competition, there is a growing participation in intramural activities. These include softball, basketball, volleyball, bowling and touch football.



New Base Gym



New Base Theater

SWIMMING POOL

There is a 50-meter swimming pool available for the enjoyment of all base personnel. Hours of operation are 0900-2200 hours. Construction of an additional swimming pool has been approved for NKP.

OUTDOOR COURTS

The tennis and basketball courts, located next to the swimming pool are open 24 hours on a first come, first served basis, except when an organized activity is scheduled. There are also additional lighted courts, adjacent to the Commando Inn dining hall, which include two basketball courts, three tennis courts and a volley ball court.

BASE THEATER

Army Air Force Motion Picture Service-Pacific provides the latest in movie entertainment. Performances start at 1300, 1630, 2030 and 2230 hours daily. A midnight showing is also held for shift workers beginning at 0030 Tuesday, Friday and Saturday. A new 350-seat theater will be completed and in operation within the very near future. The amphitheater is being converted into an outdoor theater.

BASE LIBRARY

The base library is one of the best field libraries in Southeast Asia, with more than 12,000 volumes including fiction, non-fiction, biographies and reference books. The library subscribes to the McNaughton book rental plan through which it gets many of the best sellers at about the same time they are available in United States. The selections available to base personnel are further increased through an inter-library loan system.



THAI BOXING-BASE AMPHITHEATER

RECREATION CENTER

The recreation center has a large game room with ten pool tables, two table tennis tables, three shuffleboards, two bumper pool tables, and other activities. The center also houses the photo hobby shop, tape center, TV lounge and hobby sales store. The photo hobby shop has seven enlargers, print washers, dryers and other equipment required for finishing black and white pictures.

The tape center is open 24 hours daily. There are forty tape recorders and 1,000 tapes and records for your recording and listening pleasure. The hobby sales store stocks approximately \$10,000 in hobby craft items.

RECREATION WORKSHOP

The recreation workshop includes the wood hobby shop, a slot car track and lapidary shop. The equipment of the wood hobby shop includes modern power tools and small hand tools. An assortment of wood, nails screws, glue and sandpaper for free use by patrons are available.

BOWLING CENTER

NKP's six-lane bowling center is one of the most modernly equipped in Thailand. It is open 18 hours daily and includes a snack bar with beverages and sandwiches. Future plans call for its expansion to a 10 lane facility.

BASE GYMNASIUM

The base gym is well equipped with a complete work-out area which includes a fixed set of dumbbells (15 to 55 pounds), barbells (20 to 120 pounds), an Olympic set and various equipment. The gym also includes a steam room and combination basketball and badminton courts.

EDUCATION SERVICES

A wide variety of services is offered by the Base Education Center (Bldg. 1720) to help military personnel increase their educational level through off-duty study. Available are: University of Maryland undergraduate classes; academic and vocational correspondence courses through USAFI; technical courses from ECI; correspondence courses from major universities; high school study classes; and spoken Thai classes.

In addition the Education Center offers comprehensive testing devices, professional counseling, and information on practically any educational, vocational, or career objective. Operating hours are from 0700-1800 daily except Sunday.

BASE EXCHANGE SERVICES

NKP's base exchange carries a selection of goods including shaving supplies, toiletries, watches, clothing, snack foods, and electronics and camera equipment.

Items not normally stocked by the exchange can be "special ordered" through the customer service counter. Other services offered by the counter's staff include refunds and adjustments, JAKOR Mail Order, Mail-A-Gift, Mail-A-Fur, flower mail service, layaway and Montgomery Ward and Sears orders.

Besides grill line items, the main base exchange cafeteria, open from 0600-2400 daily, has breakfast, lunch and dinner menus. Branch snack bars, located in the bowling center, the civil engineering, flight line, and the swimming pool areas, offer hot dogs, hamburgers, cold sand-

wiches, beverages and other prepared snack foods.

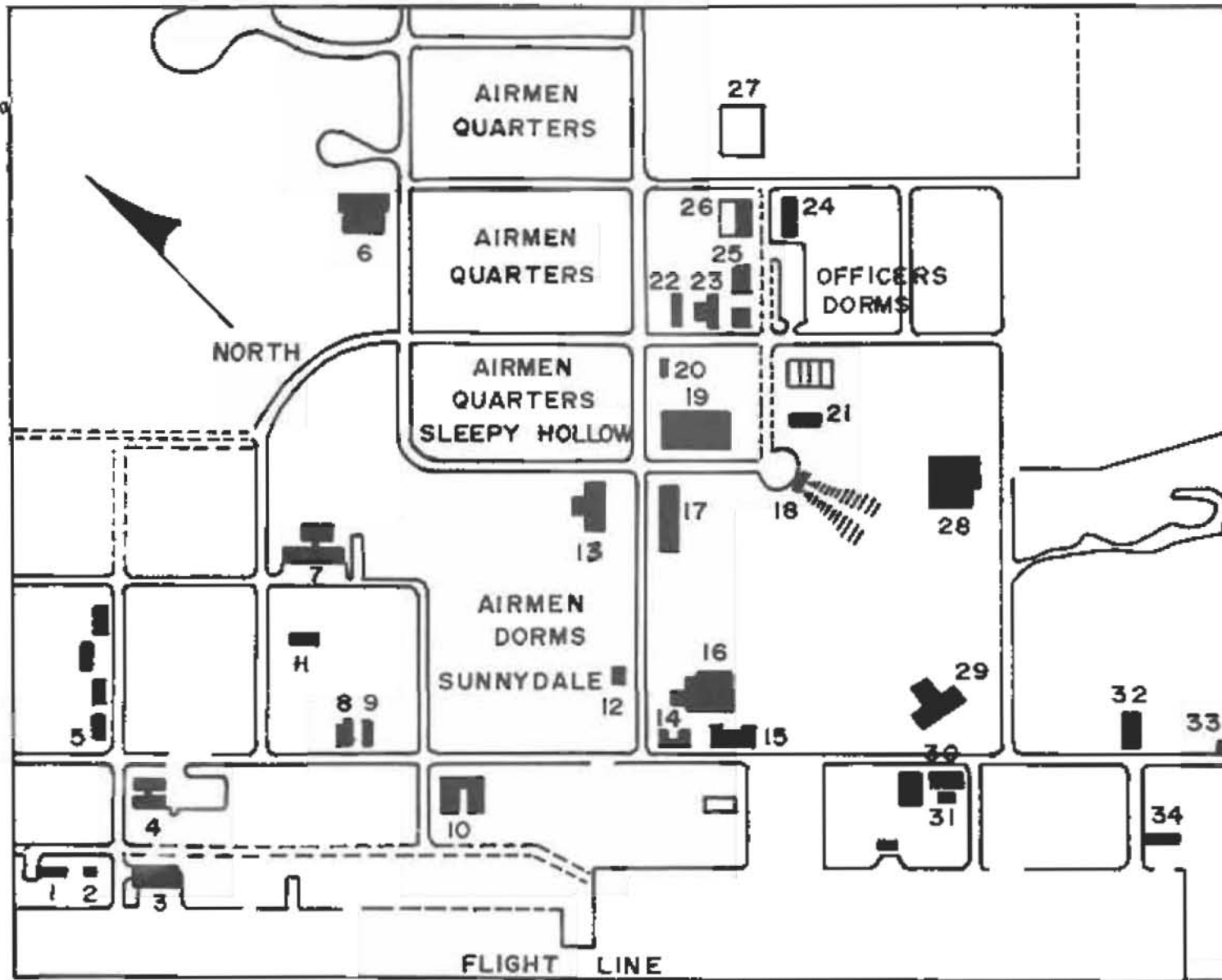
Laundry and dry cleaning services are available from 0700-1700 daily. A flat rate of \$4.50 per month is charged for laundry service. Dry cleaning is charged by the piece.

Royal Tailors provides top quality materials and services at reasonable prices. Its stock of materials range from wools, dacrons and mohair to brocades and silks.

Balco Diamonds specializes in diamonds, but also stocks pearls and other stones. It is backed by a certificate of warranty and quality.

Johnny Gems has a large selection of precious stones, rings, wood carvings, bronze ware and Thai silk. It specializes in local handicraft items.

- 1. Base operations
- 2. Control tower
- 3. Fire Station
- 4. Hq., 56th Special Operations Wing
- 5. Supply - BEMO complex
- 6. Library - Education services
- 7. Hospital
- 8. Photo Lab
- 9. Telephone Exchange
- 10. 56th Life support section
- 11. MARS Station
- 12. AFTN Radio & TV station
- 13. Commando Inn (dining hall)
- 14. Base Finance
- 15. CBPO
- 16. NCO Open Mess
- 17. Outdoor Sports facility
- 18. Amphitheater
- 19. Outdoor Sports facility
- 20. Bank of America
- 21. Theater
- 22. BX retail store
- 23. Airmen's Open Mess
- 24. Post Office
- 25. Recreation workshop
- 26. Bowling Center
- 27. Gymnasium
- 28. Officers' Open Mess
- 29. Hq., 56th Combat Support Gp.
- 30. Swimming Pool
- 31. Snack bar
- 32. Chapel
- 33. Civilian Personnel office
- 34. BX cafeteria



NAKHON PHANOM RTAFB, THAILAND

NAKHON PHANOM RTAFB

DUTY HOURS: 0700-1800

GOVERNMENT QUARTERS:

Government quarters are available to all military personnel arriving at Nakhon Phanom RTAFB. The electric current on base is the standard 110 volt 60 cycles.

DISPENSARY: Sick Call

0700-0900

1300-1400 daily (Emergencies anytime)

DENTAL CLINIC:

0700-2100 Monday through Friday

0700-1700 Saturday

(Genuine emergencies anytime)

COMMANDO INN (dining hall)

E-6 and below:

0500-0800 Breakfast

1030-1400 Dinner

1515-1600 Early Supper

1700-2000 Supper

2300-0300 Midnight Meal

Snack bar is open only from 1030-1400 hours.

AIR POST OFFICE (APO96310);

1000-1700 Monday through Saturday

Closed Sunday

Package pick-up:

0700-1800

Consolidated mail room open 24 hours daily

CLOTHING SALES STORE:

0900-1800 Monday through Saturday

Closed Sundays

AIR FORCE EXCHANGE FACILITIES:

Retail Store:

1100-1900 daily except Wednesday
1400-2100

Snack Bar;

0600-2400 daily

Beverage Garden:

0900-2400 daily

Barber Shop:

0900-1900 daily

RELIGIOUS ACTIVITIES:

Catholic Schedule:

1730 Monday through Saturday-Mass

0900 Sunday-Mass

2000 Wednesday-Choir Rehearsal

Protestant Schedule:

1000 Sunday-Church Worship Service

0900 Sunday-Bible Study

1100 Sunday-Church Worship Service

1730 Sunday-Evening Worship Service

1900 Thursday-Choir Rehearsal

OPEN MESSES:

(The Officers' and NCO open messes are open 24 hours daily)

Officers Open Mess:

All meals are served 24 hours a day.

Package Store: 0700-2300

NCO's Open Mess (E-5 thru E-9)

All meals are served 24 hours a day

Package Store: 0730-2300

Airmen's Open Mess (E-1 thru E-4)

Operation Hours 0800-2400

Snack Bar-0800-2330

Package Store: 0730-2300

Airmen's Open Mess (E-1 thru E-4)

Operation Hours 0800-2400

Snack Bar-0800-2330

Package Store-0800-2000

AMBASSADOR YOU



NAKHON PHANOM MAIN STREET

Thailand has been an independent country for hundreds of years, far longer than the U.S. It hasn't been the colony of any country, developing its own culture and heritage. The Thais are justly proud of this freedom.

We are their guests and should conduct ourselves as such, honoring Thai customs and traditions. Here are a few simple rules a Thailand visitor should know in order to avoid offending the Thai unknowingly.

* Every American is an AMBASSADOR to the Thai he meets and should act accordingly.

* Remember, we are guests here. We make no demands and seek no special treatment.

* Stand at attention when the King's anthem is played. The King and Queen are loved dearly by the Thai people.

* Be sure to remove your shoes when

entering a temple or any other place where Thais remove their shoes. They may tell you "never mind?", but they will appreciate it if you do it anyway.

* Speak in moderate tones. Loud tones are offensive to Thais.

* A Thai considers the top of his head the most sacred part of the body and the bottom of the foot is the lowest. If you raise your foot to any level above his foot you will have indicated that your foot is better than another part of his body. Never touch a Thai on the head or shoulders.

* Ask for advice on habits and customs if you have a question. The Thais are anxious to be helpful and to have you understand their culture.

* Maintain a sense of humor, be pleasant, show courtesy and you will enjoy your stay in Thailand.



SWIMMING POOL