

Binh Thuy AB: Satellite Photos

Vietnam

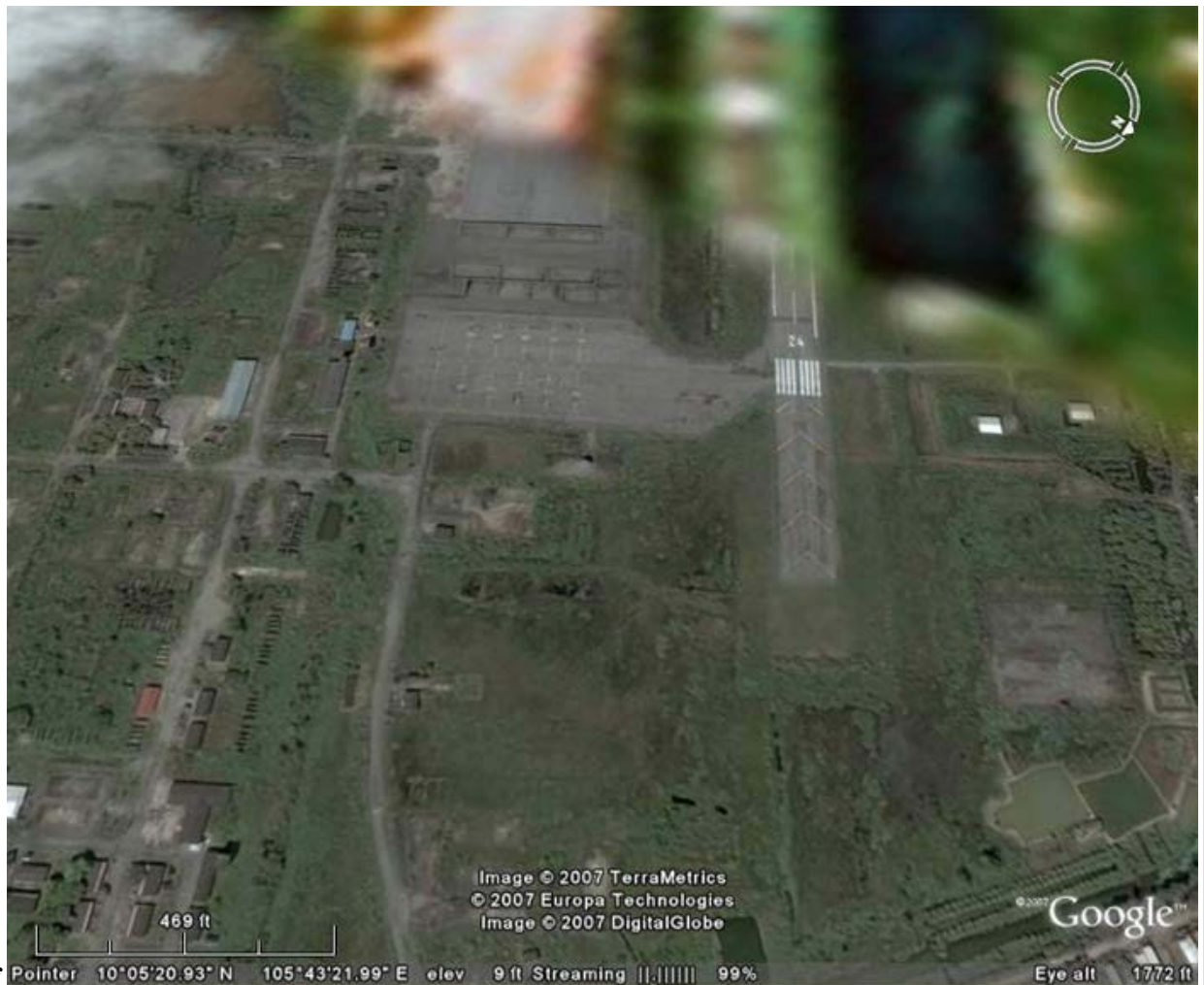
- Satellite of



BT AB, imaged Fly Over, North at 13,628 feet altitude.



- Satellite of Pointer 10°05'32.71" N 105°43'43.43" E elev 4 ft Streaming 1.|||| 64% Eye alt 4021 ft
BT AB, imaged/angled North at 4,021 feet altitude.



• Satellite of Pointer 10°05'20.93" N 105°43'21.99" E elev 9 ft Streaming ||.||||| 99%
BT AB, imaged/angled S/W at 1,772 feet altitude.

(When the quality of Binh Thuy AB satellite images are updated, they will post)

We Take Care of Our Own

[Click to Report BROKEN LINKS or Photos, or Comment](#)